

Choose Delaware

# Where the world chooses to do business



## Location



Center of largest consumer market in the United States



Close proximity to major airports, with international and domestic cargo capabilities



Cost-effective location along I-95 corridor between Washington, D.C., and Boston



Rail freight services throughout the state

Passenger rail hub

**52**  
Million + people within 250 miles

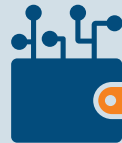
## Industry Strengths

1



Advanced chemicals

2



Financial services and fintech

3



Distribution and logistics

4



Agriculture and agriscience

5



Life sciences, biotech and pharmaceuticals

6



Business and corporate services

7



Advanced manufacturing and materials

## Business Environment

- Ranked #3 for most competitive business environment by U.S. News and World Report (2023)
- #2 for overall corporate tax favorability, according to Location Matters 2021
- Over 68% of Fortune 500 companies are incorporated here
- Undisputed leader in corporate and legal services in the United States
- No sales tax, inventory tax or value-added tax
- Competitive labor costs
- Refundable R&D Tax Credit
- Business-friendly, accessible leaders and elected officials



## Talent Pool

- Home to top-level and diverse talent from around the world
- 5th highest concentration of employed Ph.D.s in health, science, and engineering in the United States
- Highest concentration of chemists, chemical engineers, and workers in the financial services industry of any state in the nation
- More than 100 colleges and universities within a two-hour radius

### About DPP

Delaware Prosperity Partnership leads Delaware's economic development efforts to attract, grow and retain businesses; to build a stronger entrepreneurial and innovation ecosystem; and to support private employers in identifying, recruiting and developing talent.

## Living in Delaware

- Family-friendly beaches
- 17 state parks and more than 150 miles of recreational trails
- Easy access to amenities in Philadelphia, Baltimore, New York and Washington, D.C.

### Contact

W. Kurt Foreman  
President & CEO  
Delaware Prosperity Partnership  
kforeman@ChooseDelaware.com

Becky Harrington  
Vice President, Business Development  
Delaware Prosperity Partnership  
bharrington@ChooseDelaware.com

[choosedelaware.com](https://www.choosedelaware.com)

